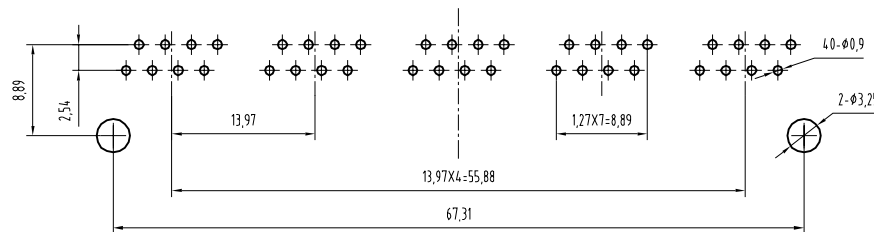
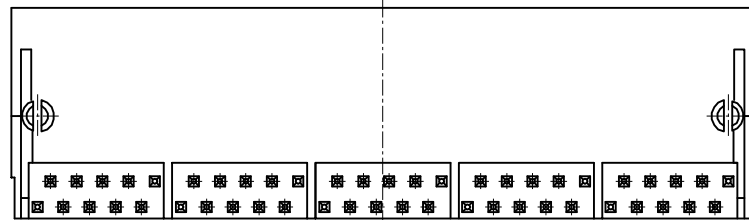
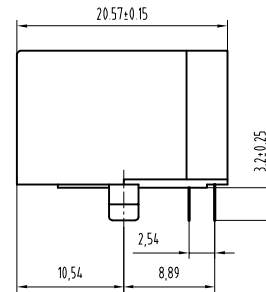
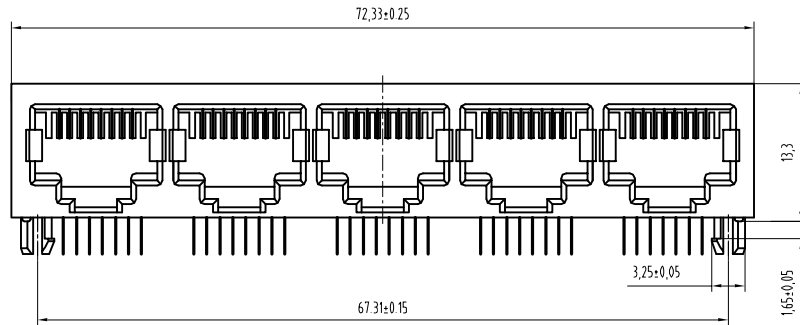


REVISION RECORD				
REV	ECO	DESCRIPTION	DRFT	CHKD



PC Board Layout
Component Side Shown

NOTES:

MATERIAL :

- | | |
|---------------------|--|
| 1. HOUSING MATERIAL | : GLASS FILLED POLYESTER UL94V-0. |
| 2. CONTACT MATERIAL | : PHOSPHOR BRONZE $\phi 0.46\text{mm}$. |
| 3. PLATING | : GOLD PLATING OVER NICKEL. |

ELECTRICAL:

- | | |
|---------------------------------------|-------------------------------|
| 1. VOLTAGE RATING | : 125 VAC RMS. |
| 2. CURRENT RATING | : 1.5 AMP. |
| 3. CONTACT RESISTANCE | : 30 MILLIOHMS MAX. |
| 4. INSULATION RESISTANCE | : 500 MEGOHMS MIN @ 500V DC . |
| 5. DIELECTRIC WITHSTANDING RESISTANCE | : 1000V AC RMS 50Hz. 1MIN. |

MECHANICAL:

- | | |
|-----------------------------|-------------------|
| 1. DURRABILITY | : 750 CYCLES MIN. |
| 2. PCB RETENTION PRE-SOLDER | : 1 LB MIN. |

ENVIRONMENTAL:

- | | |
|--------------|----------------|
| 1. STORAGE | : -40°C~+85°C |
| 2. OPERATION | : 0°C TO 70°C. |

TOLERANCES EXCEPT AS NOTED MM .1 ± 0.15 .40 ± 0.175 .118 ± 0.145 ANGLES ± 0.5 THRD ANGLE PROJECTION	DFTO: SHB CHKD: LAMBO MFO: APPVL:	DATE: 2007.05.03 DATE: 2007.05.03 DATE: DATE:			
	MATERIAL :				59A 1x5 JACK W/O SHIELD
	QTY :		DRAWING NO. TES9A1W11	SIZE A3	
	FINISH :		/PART NO.		SHEET X OF Y